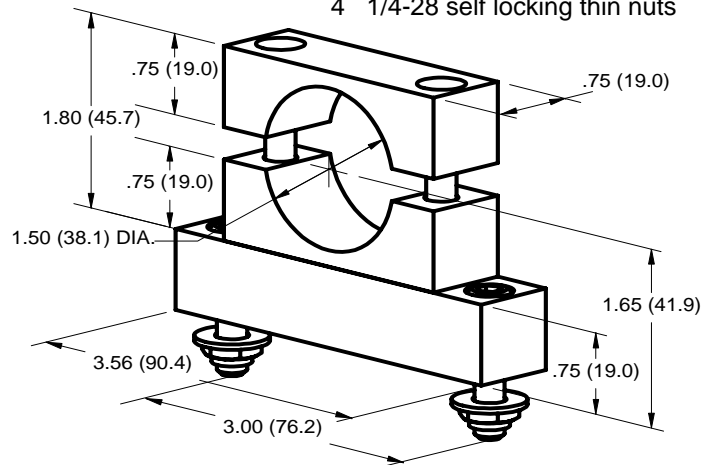


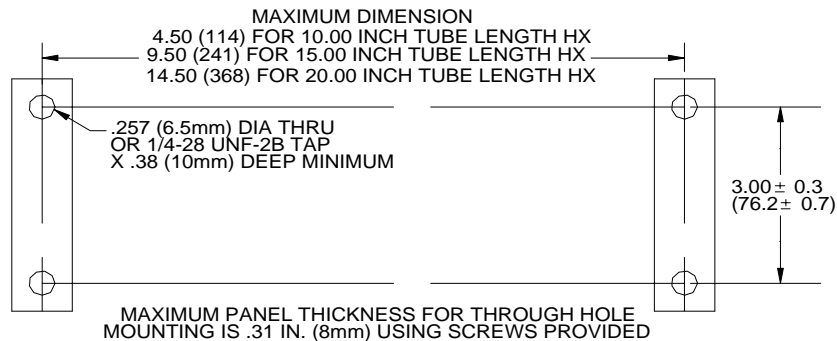
Installation of optional Mounting Kit for 35 Series Heat Exchanger; P/N: 00421-03

The Exergy heat exchanger mounting kit includes all of the hardware required to properly mount one heat exchanger. The heat exchanger may be mounted on a panel with through holes or with tapped holes. All hardware is stainless steel. Each kit contains all items listed below.

- | | |
|---|--|
| 2 upper clamps (counterbored holes) | 2 mounting stand-off (2 counterbored holes & 2 tapped holes) |
| 2 lower clamps (straight holes) | Hardware for mounting to tapped holes |
| Hardware for mounting clamps to stand-off | 4 1/4-28 x .875" long socket head cap screws
(torque to 95 lb-in (10.7 N-m)) |
| 4 1/4-28 x 1.75" long socket head cap screws
(torque to 95 lb-in (10.7 N-m)) | 4 1/4" high collar lock washers |
| 4 1/4" high collar lock washers | Hardware for mounting to through holes |
| | 4 1/4-28 x 1.125" long socket head cap screws
(torque to 95 lb-in (10.7 N-m)) |
| | 4 1/4" flat washers |
| | 4 1/4-28 self locking thin nuts |



DIMENSIONS ARE IN INCHES (mm)



MOUNTING HOLE PATTERNS

